



## From the President's Ponderings!

The first meeting in July started the new Rotary Year. President Stephen Jakeman passed over the mantle of President to myself.

I was able to thank Stephen for an excellent year under his leadership. It was also good to see a number of guests at the meeting celebrating the Rotary Club of Banbury.

On the 14<sup>th</sup>. July we had as our speaker Jim Hill whose subject was Battlefields and War Graves, and he was hosted by Rotarian Michael Banks. After the meeting Brian Croft and myself did a quick run to St Hugh's Hall for the Inner Wheel changeover. My wife Ann passed over the Presidents Jewel to the incoming President Hazel Croft.

Early on Wednesday morning I received a call from Maurice Humphris to attend Banbury School to hand over a cheque. The cheque to the value of £1,500 was for the Pakistani Earthquake relief fund, and was part of the £5,000 total we raised from the "Auction of Favours". Banbury School together with a committee chaired by Councilor Eric Heath is hoping to Fund the rebuilding of a School in Pakistan. A target of £100,000 is aimed at by the committee, which is involving children from Banbury School and other schools in the area. Sarfraz Bhatti, who has spoken to our club, went to Pakistan to arrange with the Pakistan authorities the rebuilding of the school currently being held in tents.

Rotary members on the 21<sup>st</sup> July, were treated to a thought provoking talk by Professor John Harvey his subject was Health and Wealth. He was hosted by Rtn. Rupert Kipping.

The final Rotary meeting of the month had as it's speaker Nigel Walker who's subject was "Chinese Puzzles and Crackers," a fascinating insight on conducting business in China, hosted by Andrew

Fairbairn. We also had a visit from past President Reg Charles now at Weston Super Mare.

**President David**

## Foundation Committee – The Year Ahead



The Foundation Committee held their first meeting in August, and asked if I could include a brief summary of their agenda for the year ahead.

The main items are the proposed target for Foundation for 2006/07 and the events to be held to try and achieve that target.

The main planned events are as follows:

A Christmas Concert St. Mary's is booked for 9th December. Banbury Symphony Orchestra cannot perform. It is proposed to seek an alternative Orchestra and Choir if they can perform on that date.

A Frugal Lunch has been suggested by the President for February 23rd as that is President's Night.

David Barlow will keep in touch with Fred Temlett with a view to arranging another trip to Little Tew Theatre if possible.

It has been suggested that we might get members to fill Smartie tubes with 20p's. Bob will follow this up in due course.

It has been agreed that we will carry out the Christmas card collection which Brian Cornley is to organise.

**Speaker report - August 11th  
Brendan Morrison (Forum Support Officer) on the  
Patient & Public Involvement In Health Forum –  
Cherwell Vale.**

Brendan outlined the role and powers of the forum - consisting entirely of volunteers.

They have many legal powers, including;

- Inspecting all NHS premises in their area of action
- Asking NHS management for information (20 day time limit)
- Liaise with other bodies e.g. County Council health committees
- To be consulted on all significant NHS services changes
- To be listened to up to Secretary of State
- To call on the services of the Commission for PPIH and the Healthcare Commission
- To link up with other PPI forums
- To set up subcommittees involving non-PPIF members
- To represent public opinion on NHS issues.

Forums have a legal duty to:

- Take reports on visits to NHS premises and other significant activities and circulate them to statutory bodies
- Publish minutes and agendas of Forum Meetings
- Liaise with their allocated NHS trust
- Be CRB vetted
- Maintain patient confidentiality
- Obey the Commission's Code of Conduct and Cabinet Guidelines.

The workload of the local PCT forum includes:

- Looking at discharge procedures from the Horton and working with Social Services
- GP surgery visits from the patients perception
- The major movement to GP planning of hospital admissions
- The future of cottage hospitals Commissioning Committees – who designs services and puts them out to tender (Dentistry, Podiatry, Prescriptions)

- The new electronic medical records systems.

He also touched on the forums involvement with the future of the Horton Hospital. The Trust is by law to consult the local community. This consultation began in June and runs until October 16th. The population of Cherwell Vale is as large as Oxford. Is the ORH telling the truth about slimming down.

The Forum feels there is only one way to stop what they fear may be the run-down and closure of departments and services. That is – public opinion rejecting the plans of the ORHT to move key services.

Rtn. Helen Braisby

**Nature Corner**

I think you will find the following article fascinating, if possibly a little gruesome!!

If you read the text on this page first to explain what you're about to see, and then turn over, preparing yourself for the grisly image.....

Wild dogs savage alligator - nature at its best.

At times nature can be cruel, but there is also a raw beauty, and even a certain justice manifested within that cruelty.

The alligator, one of the oldest and ultimate predators, normally considered the "apex predator" in its natural eco-system can still fall victim to implemented 'team work' strategy, made possible due to the tight knit social structure and "survival of the fittest pack mentality" bred into the wild canines of Africa over the last several hundreds of years by natural selection.

See the attached remarkable photograph courtesy of Nature Magazine...

Note in particular the way that the Alpha dog has a muzzle hold on the alligator preventing it from breathing, while the remainder of the pack prevent the beast from rolling.



## Shelter Boxes



Thanks to Roger Worrall for forwarding on this timely reminder of how Shelter Boxes sadly continue to be needed as a crisis in one part of the globe seems to be followed by one in another, all of which see Shelter Boxes playing their part.....

### **Help for Lebanese on its way from UK**

Emergency accommodation for thousands of Lebanese who have fled their homes is being despatched by the disaster relief charity Shelter Box.

An initial consignment of enough tents and blankets for 2000-plus people is being flown to Cyprus, for onward distribution to Lebanon.

The Cornwall-based charity says further aid will follow, both for those displaced within Lebanon and for the estimated 25,000-plus refugees who have fled the country and are now stranded in Cyprus.

Shelter Box was set up by a Cornish Rotary club and will be working through Rotary clubs in Limassol and Beirut to get the aid to the neediest victims of the conflict.

The charity's general manager Tom Henderson said: *"Our immediate aim is getting help into Beirut and the north of Lebanon. By working through local Rotary clubs we will be in close touch with the situation on the ground and able to get aid to where it is most desperately needed."*

The charity was only launched in 2000 but its track record so far includes getting more than 140,000 people into emergency accommodation following the Southeast Asian tsunami and it is now working closely with UNICEF in Somalia.

Scott Givhan from the Rotary Club of Limassol-Berengaria Cosmopolitan is in touch with his counterparts in Lebanon. He said: *"The larger organisations are doing a good job getting aid to the main refugee points but Rotary, in conjunction with local governments, remains the only source of support for many people."*

*"There were 10,000 refugees in the region of Batroun in the north before the recent ceasefire and this number is sure to grow. In addition, one Rotary club in the hills above Beirut has just informed us that they are looking after 6,000 refugees with no support."*

Mr Givhan added that Lebanese Rotarians are currently risking their lives to distribute emergency supplies – using their own cars rather than trucks or vans so as to lower the risk of being targeted by Israeli airstrikes.

- A note from:

From: "Peter Jones"  
Subject: Lebanon Update  
Date: Sun, 27 Aug 2006 13:42:27 +0100

LEBANON UPDATE 27-08-06.

Having been in correspondence with the RC of Limassol Berengaria Cosmopolitan, in regard to the situation in the Lebanon, and how Rotary in Cyprus was assisting with the shipping of ShelterBoxes and aid etc. This message arrived and I thought that I should share this with you all, as it gives, as well as thanks, a hint of what the current situation is, and an indication of what the future holds.

ShelterBoxes appear to be a continuing need, and your support for our Box Organisations is much appreciated, not only by the organisations themselves, but the recipients of these boxes, whose life often depends on our support.

I am forwarding the latest update from Scott Givhan, the only American member of the Rotary Club of Limassol Berengaria Cosmopolitan.

Dear All:

Our next shipment of 8 pallets of foodstuffs and 209 Shelter boxes is now being loaded for departure on Saturday. Over 150 Shelterbox tents have already been distributed and erected in southern Lebanon by RC Batroun this week and we look forward to some new pictures of those.

For the Rotarians in the crowd, I would like to mention how heartening it is to see the way our Rotary affiliation has allowed us to rise above the political, religious and ethnic divisions in Lebanon and so many parts of the world.

We have received new pledges of financial support from RC Hickory Sunrise in North Carolina as well as official thank you letters to Rotary from the US Embassy for our efforts to comfort the evacuees in July.

With the Middle East conflict (thankfully) dropping out of the headlines, I would like to thank all of you who are still sending in financial support.

With the damage sustained to the country's infrastructure, it is doubtful whether life will return to normal for many any time soon.

At present our focus continues to be on shelter and then food and medicine. In the future, this need will hopefully drop and we will be looking to return to our initial focus on families and children especially with the opening of school just around the corner.

While our efforts may not be quite so standardized as today's tents and foodstuffs, we will continue to endeavour with our fellow Rotarians in Lebanon to find ways to use Rotary Aid efficiently.

Cheers,

Scott  
RC Limassol Berengaria.

After the rash of press coverage over the 'A' and GCSE results, I thought you would like to see a couple of model answers from the maths papers.....

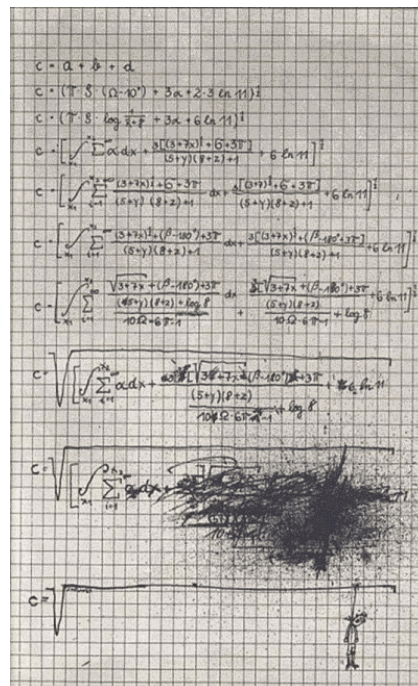
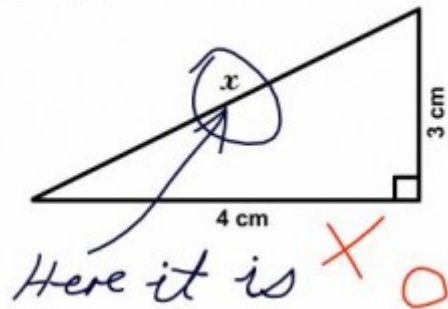
Solving equation by one Blondie:

$$\frac{1}{n} \sin x = ?$$

$$\frac{1}{n} \sin x =$$

$$six = 6$$

3. Find x.



## **Speaker Report for Friday 28<sup>th</sup> July 2006**

### **Jim Flux – Chair of the Council for Voluntary Services**

In introducing himself to Rotary Jim briefly outlined his educational and employment history. A graduate of Oxford University he spent his national service as an officer in the army and then joined the international Plc Proctor and Gamble. During a highly successful and interesting career Jim spent time working for the company in 16 different countries culminating in a senior general management role in Switzerland.

For many years whilst working abroad Jim and his wife Jean retained a family property in Deddington and when offered early retirement in 1989 it suited them to return to the UK and take up residence there again. At that time Jim started looking for local interests to keep him occupied and he has since become well known for his extensive public service.

The Banbury Volunteer Bureau has been in existence for some 27 years and on moving back to Oxfordshire Jim took up the role of secretary in 1989. Since that time a variety of initiatives have been taken forward with the UK's first Carers Support Group being formed in the early 90's. A volunteer section that manages a store for the recycling of furniture was developed and the Banbury Carers Centre became established in permanent offices in Horsefair a few years later.

This has a database of three and a half thousand names of carers who need support and volunteers who may be prepared to provide this. The office is open five days a week and provides a wide range of assistance including the support of the elderly and disabled and the provision of volunteer car services that are in increasing demand. More recently a group has been established in the Deddington area to provide assistance for elderly and frail people.

Jim has been Chair of the local Council for Volunteer Services since its formation in the early 90's. The Banbury and District CVS exists to help voluntary groups in North Oxfordshire. Its functions and objectives are to:

- Develop initiatives in the voluntary sector.
- Provide services to local voluntary organisations.
- Facilitate co-operation between voluntary bodies, local authorities, and statutory agencies.
- Respond to the needs of local voluntary bodies.
- Act as a focus for co-ordination between statutory bodies and voluntary organisations.

- Avoid duplication of effort.
- Support and encourage new voluntary initiatives in the community

Some 38 organisations are involved and the Cherwell District Council plays an important role in maintaining contact with all groups, bringing them together from time to time and providing facilities for meetings and communication including the publication of a regular newsletter.

The Banbury CVS has been heavily involved with CDC in developing the Community Plan that has recently been published and provides an important template for the future. The community trends and requirements are considered with appropriate plans and direction provided for fund raising and obtaining government support in a form of partnership. A key objective for all parties is to strengthen the voluntary sector across the whole of the UK to provide for the future that will be increasingly dependent on the volunteer services of those with commitment and energy to support those less fortunate than themselves.

Jim took the opportunity to mention the continuing need for new recruits both for the CVS and the Volunteer Bureau. They are looking for individuals who enjoy the work and the opportunity to make effective use of their life and career skills and experience. He mentions that whether someone has a few hours or regular days available the group are sure that a worthwhile, interesting and satisfying role may be found for anyone who volunteers support.

**Rtn. Bernard Goodchild**

## **ROTARY CLUB OF BANBURY ROTARIANS "IN-HOUSE" DUTIES 2006/07**

### **Duties**

The following duties need to be carried out at the weekly luncheon meeting when notified in the monthly bulletin. The duties are also posted on the notice board and are announced in the Secretary's announcements the previous week.

Usually duties at 5th Friday evening meetings are carried out by members of the Fellowship & House Committee. In the event of other members being asked to help they would be fully briefed in good time.

If you are unable to carry out the specified duty, please ensure that you find a suitable substitute and mark the Rota on the notice board accordingly. It is particularly important should you intend being away from the club for several weeks.

### **Fellowship**

- a Arrive no later than 12.30 pm
- b Ensure that ALL visitors are welcomed by the 1st and/or 2nd Vice Presidents, and give visiting Rotarians attendance cards if requested. These are kept in one of the small drawers in the rotary cupboard in the 'George Shaw Room'. Please see that all visitors sign the "Visitors Book".
- c Complete agenda form in block letters giving details of ALL visitors present and hand to the Hon. Secretary at 1.00 pm.
- d Check whether visiting Rotarians have brought a banner and if so warn the secretary.

- e Say Grace immediately prior to the meal as introduced by the president.

### **Cash Desk (This is a two member job)**

- a Arrive no later than 12.30 pm. Some members arrive as early as 12.15 but there are usually Fellowship & House members present who will cover for a short while.
- b The current meal charge for Friday lunch is £9, so please arrange in advance with your partner which of you is to bring some £1 coins (£40 is advisable). In emergencies the Chairman of Fellowship & House usually has some.
- c Tick off names of members on list provided as they pay, adding names of visiting Rotarians and any other visitors and of any who are being paid for by the Club, e.g. the Speaker, and allocate all to tables. Record the number of people present and number of members who have paid.
- d At 1 o'clock, balance total cash against number present, give cash to the caterers and the list to the Club Attendance Officer, Gareth Jeremy, or his deputy, Tony Wiltshire .

### **Table Duty (Usual allocation six members)**

- a Arrive no later than 12.45 pm
- b Service the table allocated to you by the Fellowship and House Members in charge.

Maurice Humphris,  
Chairman, Fellowship and House Committee